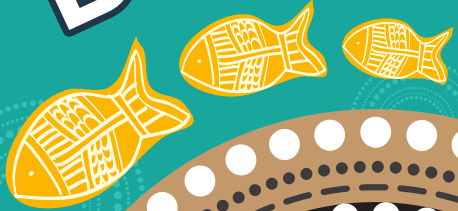
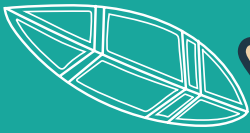


Did you know?

From the escarpment (mountains and climbing house) to the Lake (canoe area) to the Sea (whale), the Yirran Muru playspace has been inspired by the journey of local Aboriginal people.



YIRRAN MURU Activity Book



My Name is...

Shellharbour
Civic Centre



Question?

What is our local Aboriginal language?

Question?

What does Yirran Muru translate to in English?



My Day

I felt...

.....

The weather was...

.....

We got here by...

.....

I'm here with...

.....

My favourite thing about Yirran Muru is...

.....

.....

.....

NANGANGBI



Yirran Muru is a fun place to

waRayi



Learn to say Koala in Dharawal

gaRiLwa



Draw Pictures OR Write Words to
Represent what you might find in
that area of Shellharbour

the mountains

the lake



the Sea



BACKYARD BINGO

Try and complete all the challenges...



BAWINYA

Climb the leafy ladder on the tree house



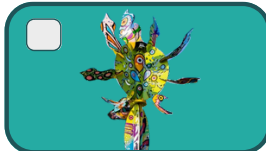
DJAWA

Run through the Ganyah



Nandhi

See if you can find the Bush Tucker Macadamia Nut



DJAWA

Run to the Biotica sculpture and back



BAWINYA

Climb onto the back of the whale (Burri Burri)



NGALA

Sit in the canoe and row along the lake



WARAYI

Play hopscotch and jump along and over the stepping stones



NGALA

Sit in the sand and make prints of your hand



YIRI

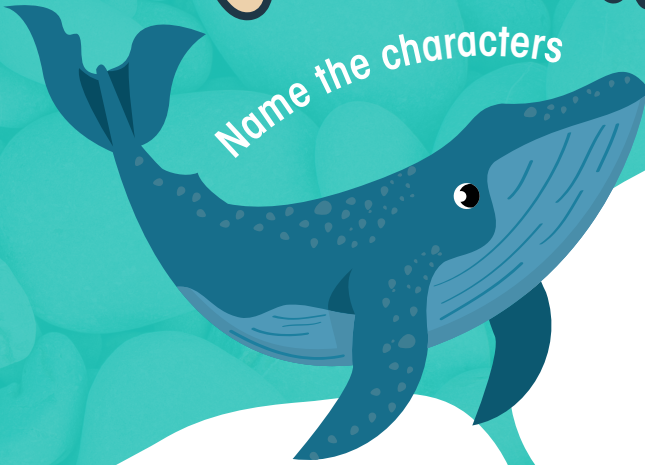
Throw an imaginary boomerang to the Koala (Garitwa)



Can you find
the story about
WINDANG ISLAND?

GANG MAN GANG

Name the characters



Can you find the starfish

GHOON a GHAAN?



Draw where you found it

YIRRAN MURU IN NUMBERS

How many hands long
is the **Canoe**?



How many
stepping stones
are there
from the
Whale
to the
GUNYah?

How many
sticks does the
GUNYah
have?



How many
steps long
is the
Whale?



fiND a leaf, Stone OR a ROUGH SURface

**Put it under the paper and rub
a pencil over it to make
a texture rubbing**

Shellharbour
Civic Centre